

Discover Trinity: Integrated Skills in English (ISE)

Alison Castle Kane & Alex Thorp

Integrated Skills in English

Today's session

1. About Trinity and our exams
2. The making of ISE
3. ISE – structure and tasks
4. Running Trinity exams
5. Your questions

trinitycollege.com/ISE

Trinity in the landscape



Our qualifications

Trinity Stars

Young Performers in English Award

A **performance based** group award for young learners

Ages 3 - 12

GESE

Graded Examinations in Spoken English

A **speaking and listening** assessment for all ages

Ages 5+

ISE

Integrated Skills in English

A **four skills** exam for teenagers and adults

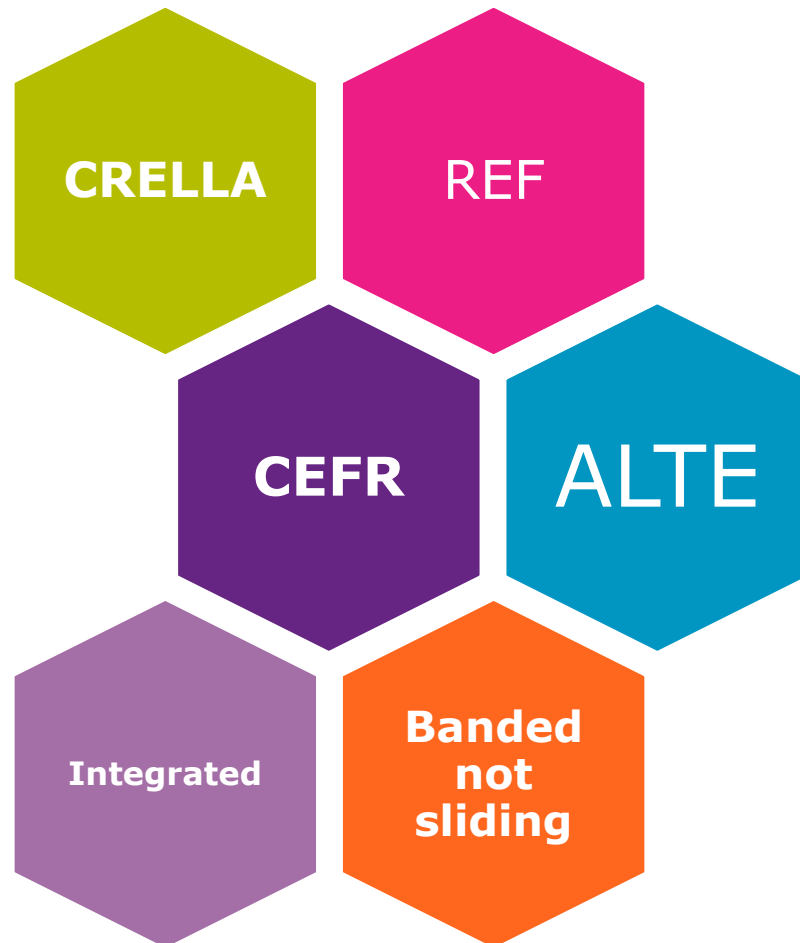
Ages 11+

TESOL

CertTESOL, CertPT, DipTESOL & TYLEC

Qualifications for **new and experienced** teachers

ISE Research Origins:



What students need to succeed:

21st Century Skills

**Tony
Wagner**

Expert in
Residence
at the
Innovation
Lab of
Harvard

Critical thinking & problem solving

Collaboration and leading by influence

Agility and adaptability

Initiative and entrepreneurship

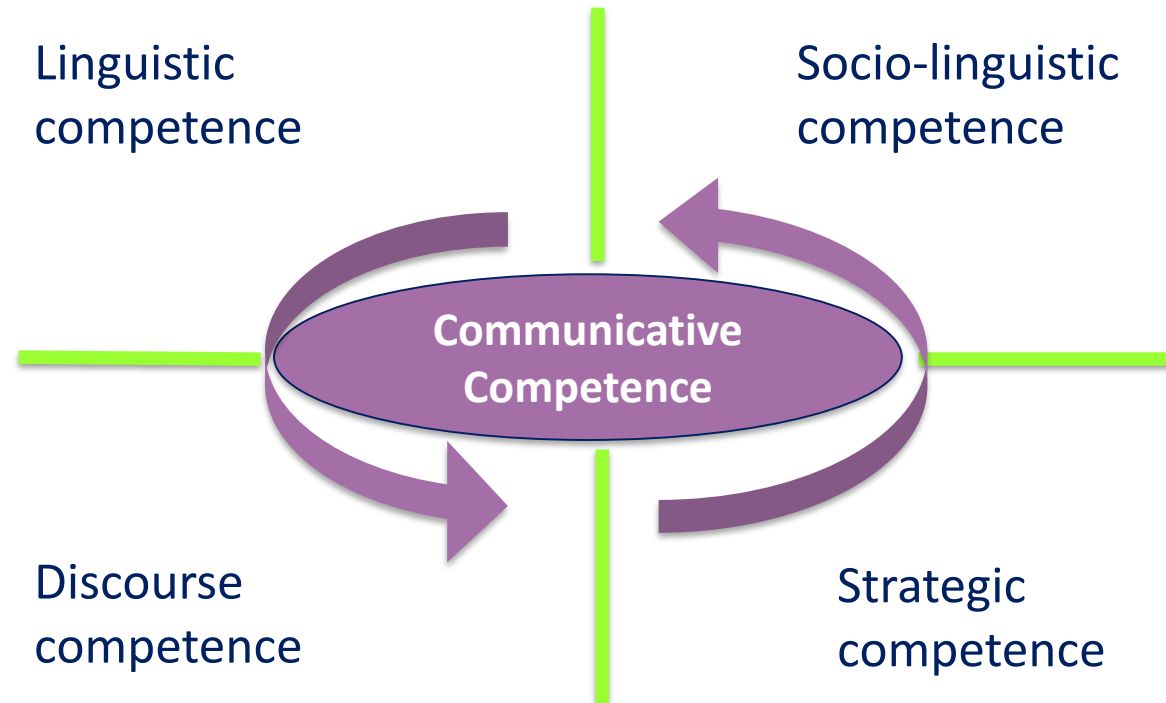
Effective oral and written communication

Accessing and analyzing information

Curiosity and imagination

What students need to succeed:

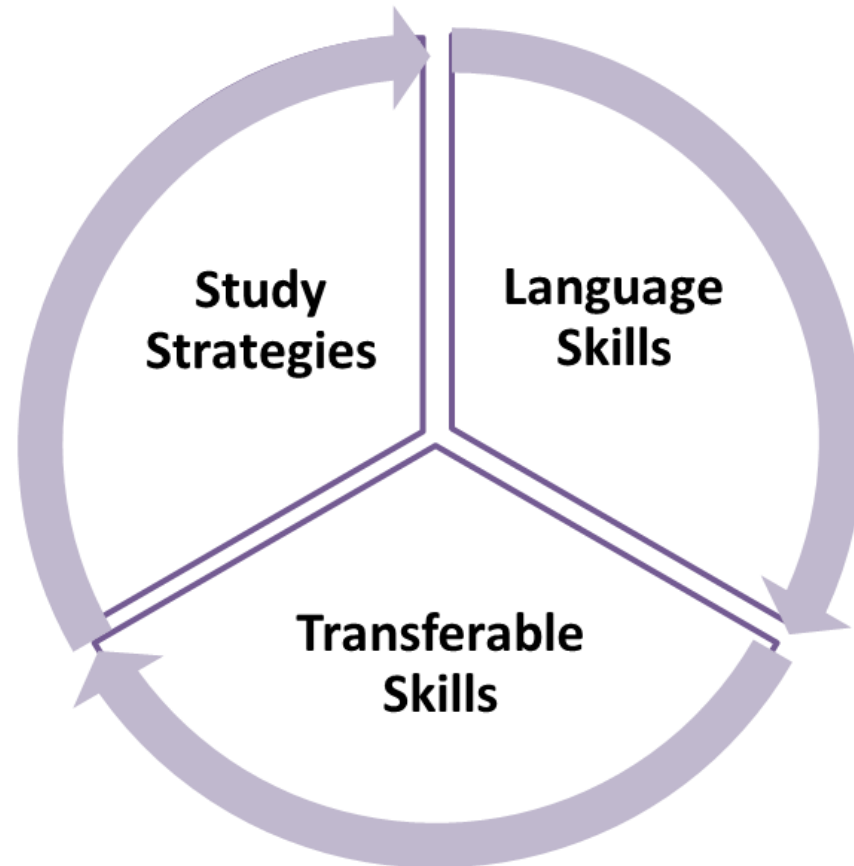
Language skills = Communicative competence



Bachman & Palmer (2010): communicative competence model

What students need to succeed:

What kind of test generates positive washback?



What students need to succeed:

Study Strategies	Note-taking
	Summarising
	Synthesising
	Sourcing relevant data across texts
	Planning
	Self-checking and self-evaluation
	Deducing and inferring

ISE Structure and Tasks

What is ISE?

- Our ISE exams cover **5 levels** from CEFR A2 - C2 and test the candidates across 4 skills
- ISE is specifically aimed at young adults who need **English for academic study**. ISE has growing recognition for university entrance purposes, and is recognised by the Irish Naturalisation and Immigration dept for visa purposes
- There are **2 modules: Reading and Writing; Speaking and Listening**; they can be taken together, or at different times



RECOGNISED BY THE
IRISH NATURALISATION AND
IMMIGRATION SERVICE (INIS)



What students need to succeed:

Language skills = Communicative competence

Questions:

When do you speak without listening?

When do you write without reading?

Answer:

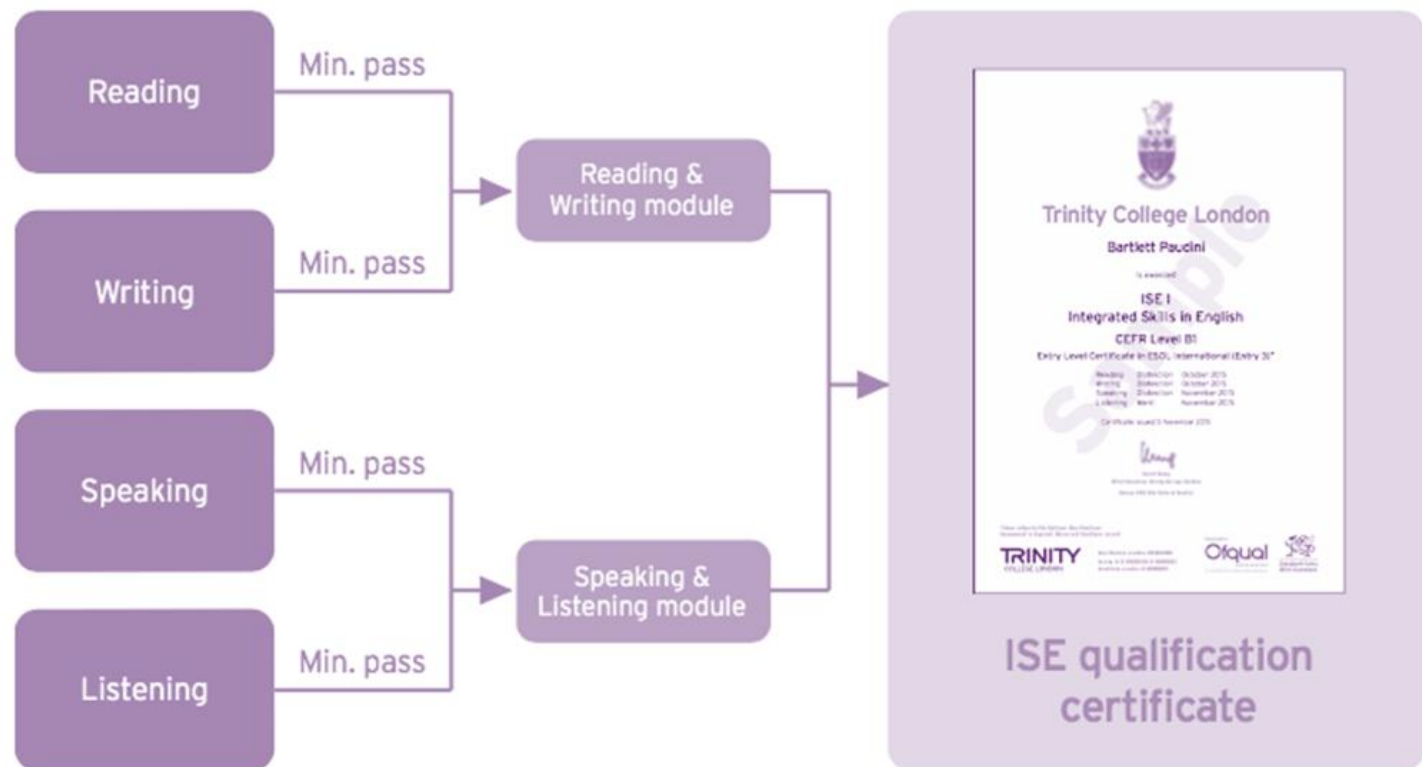
Communicative competence requires
assessment that **tests skill integration**

Module Overview - ISE

	ISE Foundation A2	ISE I B1	ISE II B2	ISE III C1
Reading & Writing	4 tasks with the same structure across all four levels: 2x Reading tasks, 1x Reading into writing task, 1x Writing task <i>2 hours</i>			
Speaking & Listening	2x Speaking tasks 2x Listening tasks 13 minutes	2x Speaking tasks 2x Listening task 18 minutes	3x Speaking tasks 1x Listening task 20 minutes	3x Speaking tasks 1x Listening task 25 minutes

Note: ISE IV (C2) has a different format

Full Qualification - ISE



Results shown for each skill:

Reading, Writing, Speaking, Listening

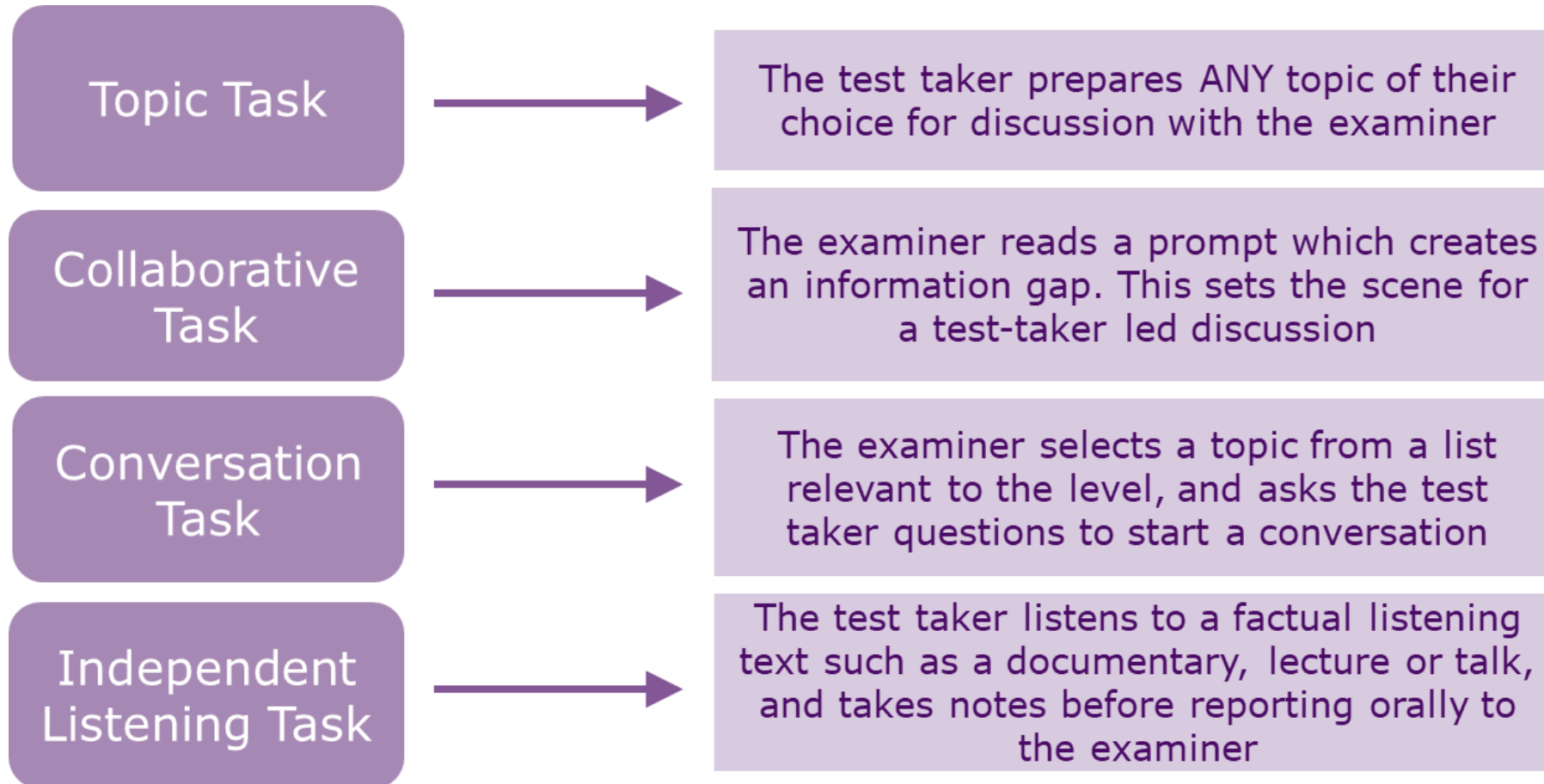
- Pass
- Merit
- Distinction

ISE Assessment Summary: Speaking and Listening Module

	ISE Foundation (A2)	ISE I (B1)	ISE II (B2)	ISE III (C1)
Topic task	4 minutes	4 minutes	4 minutes	8 minutes
Collaborative task	-	-	4 minutes	4 minutes
Conversation task	2 minutes	2 minutes	2 minutes	3 minutes
Independent listening task/s	6 minutes	10 minutes	8 minutes	8 minutes

ISE Speaking and Listening Tasks

Independent and Interactive listening are both featured in ISE

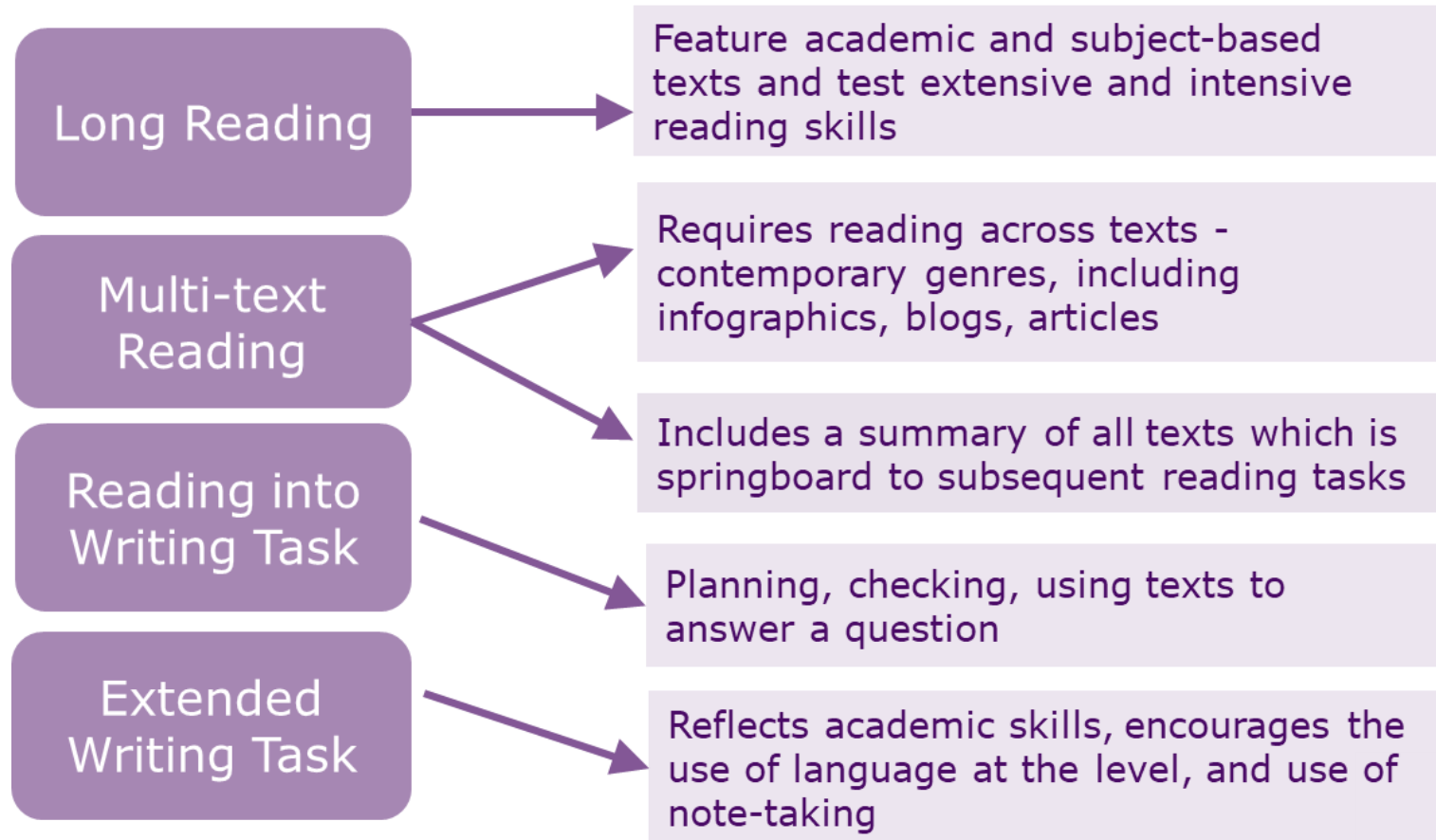


ISE Assessment Summary: Reading and Writing Module

	ISE Foundation (A2)	ISE I (B1)	ISE II (B2)	ISE III (C1)
Time	2 hours			
Task 1	Long reading 300 words 15 questions	Long reading 400 words 15 questions	Long reading 500 words 15 questions	Long reading 700 words 15 questions
Task 2	Multi-text reading 3 texts 300 words 15 questions	Multi-text reading 4 texts 400 words 15 questions	Multi-text reading 4 texts 500 words 15 questions	Multi-text reading 4 texts 700 words 15 questions
Task 3	Reading into writing 70-100 words	Reading into writing 100-130 words	Reading into writing 150-180 words	Reading into writing 200-230 words
Task 4	Extended writing 70-100 words	Extended writing 100-130 words	Extended writing 150-180 words	Extended writing 200-230 words

ISE Reading and Writing Tasks

Support the development of integrated, transferable skills



ISE by Online Delivery

Same exam,
Different delivery

trinitycollege.com/ISE

TRINITY
COLLEGE LONDON

ISE by Online Delivery



A 21st century solution under the current pandemic conditions

- Candidates take their exams online **in registered exam centres**
- The same Trinity one-to-one communicative exam
- The same Trinity exam content is assessed
- The same Trinity results and certification

Logistics and Support – staying safe

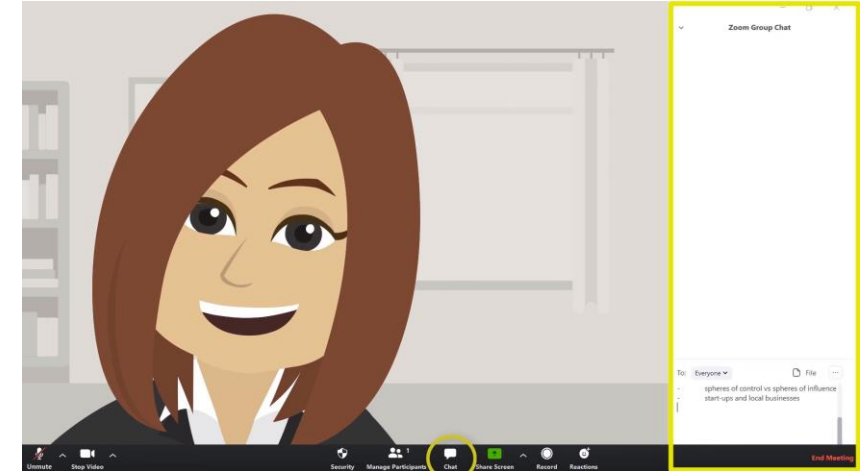
At the time of booking:

- You will be required to confirm your understanding of and compliance with current government guidelines around safety and precautions related to Covid-19
- You will be required to attend an online training session that will summarise procedures and give you the opportunity to ask any questions
- You will be required to provide photographic evidence of examining spaces and computer stations set up/configuration
- You will be required to ascertain signed permission from parents or guardians of learners taking an online version of GESE or ISE that are under the age of 16
- You may be required to provide a video tour on the exam day to demonstrate that all required procedures are in place

ISE by Online Delivery

Booking procedures

- Bookings are still managed over the Trinity online portal
- Bookings must be made **30 days prior** to the examination day
- Candidate details - including levels, must be entered at the time of booking
- There are **no minimum fees or minimum candidate numbers** to run an ISE session with your students
- Centres will be responsible for checking and confirming candidate identity



Questions?



Join us this week -

Preparing for ISE in a
Blended or Online
Environment

Reading and Writing: Thurs 12 November - 4pm

Speaking and Listening: Fri 13 November - 4pm





Thank you for attending

alison.castle@trinitycollege.co.uk

trinitycollege.com/ISE

Alison Castle Kane & Alex Thorp