

# Workplace English Language Learning - Making it happen!

Gill Kincaid-Dugen

The Future of English Language  
Teaching Conference **ONLINE**

**#FoELT**

Into work

Community

In work progression

## In work progression

**Does it fully address Equality and Diversity to teach those ESOL students for whom it is easiest to attend college classes?**

**How do we improve access to English language provision for employees?**

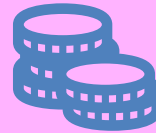
# Who has the most to gain?



Employees



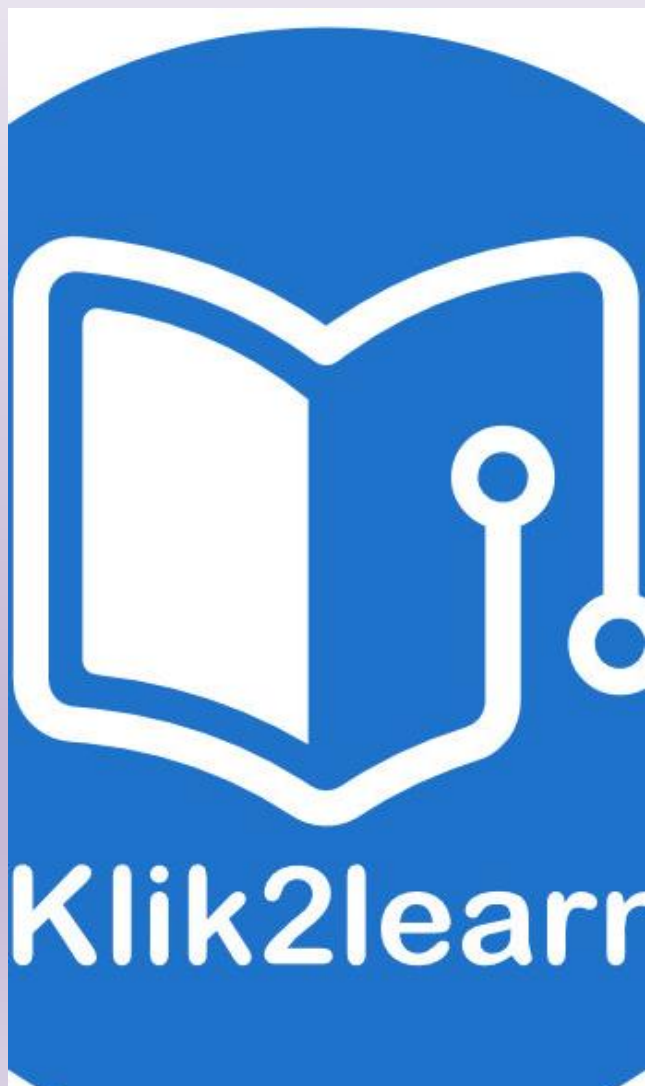
Employers



Local  
Economy



Local  
Community



# Our Offer

- **Teacher-supported online learning package**
- **Journey 2 English**
- **Developed by Klik2Learn**
- [www.journey2english.com](http://www.journey2english.com)
-

# Teacher Supported online offer



**Fully funded  
(free to  
employer  
and  
employee)**



**Designed  
for non-  
native  
speakers**



**Designed  
by ELT  
experts**



**Fully flexible  
around shift  
work and other  
commitments**



**Designated  
English  
language  
teacher**

# Our partnerships in Derbyshire



FURNITURE  
MANUFACTURING



ANIMAL FEED  
MANUFACTURING



RETAIL



WAREHOUSING

# What we learnt

- Levels of English – Food Production - lack of English communication skills – A lower level online course required – (available now)
- Various levels – Retail and manufacturing
  - Some online with tutorials
  - Some taught sessions
  - Bespoke teaching – including company procedures
    - Accident Reports
    - Holiday requests



**Health and  
Safety-  
Productivity**


**Inclusion -  
Employees  
valued**

**Company  
Procedures  
Employer  
responsive**

**Proactive  
Educators**

**Proactive  
Employers**

**English as the language  
of the workspace**



The diagram features a central brown silhouette of a tree. The trunk of the tree is shaped like an open hand with five fingers pointing upwards. Five stylized leaves are attached to the top of the trunk. From left to right, the leaves are: orange, red, green, light blue, and purple. Each leaf is associated with a text label in a matching color. At the base of the tree, there is a cyan rectangular box containing the text 'English as the language of the workspace' in black.



**The Midlands Engine partnership brings together public sector partners and businesses to complement the activity of local and combined authorities, LEPs, universities, businesses and others**



RETAIL



MANUFACTURING

**Level of  
English**



PRODUCTION  
OPERATIVES

# PATHWAYS / PROGRESSION –

## Previous Case Study -



Fleetwood Architectural Aluminium –

Bespoke ESOL classes –

Company specific paperwork and procedures

Two promotions resulting from ESOL course – paid for by company –  
delivered at Fleetwood's training suite

# Rational

- Providing a mechanism for companies to offer practical solutions to the those working continental shifts
- *“I think that the ESOL project is splendid opportunity for employees, both online and in class. They all attended and enrolled entirely voluntarily and were keen to learn.” Pamela - Rumenco*



# Future of Employee Engagement with ESOL Delivery

Relationship building

Funding

From beginners to  
Intermediate

Company mentors



## This session has now ended

We hoped that you enjoyed this presentation. Please continue to your next session at:

[www.learn.trinitycollege.co.uk/FoELT-event](http://www.learn.trinitycollege.co.uk/FoELT-event)

**The Future of English Language  
Teaching Conference** **ONLINE**